



INNOVATION WORKING FOR YOU

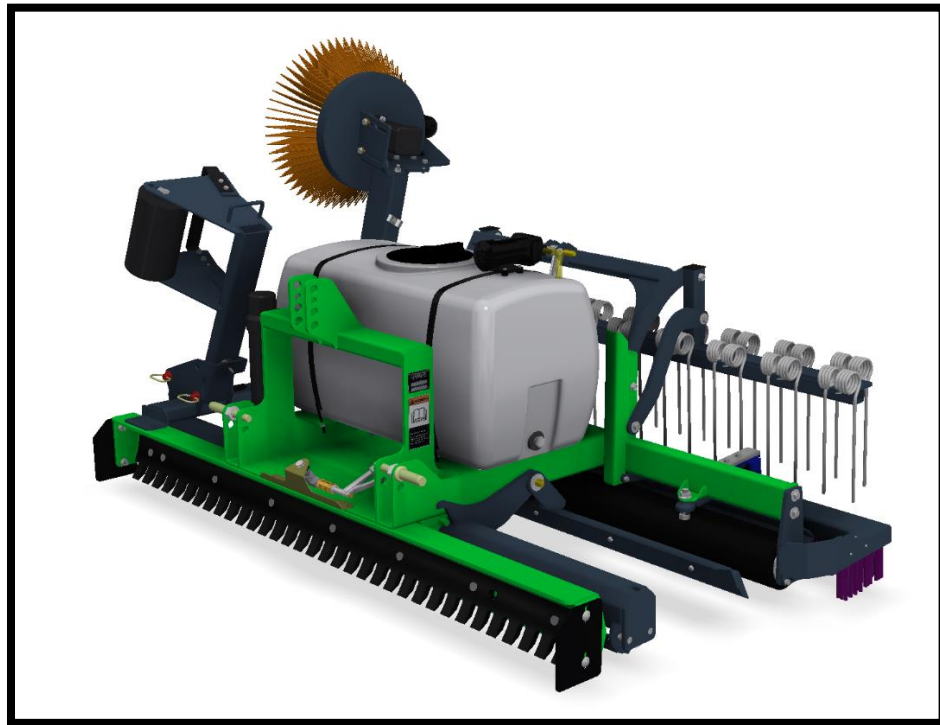


D84

## IN-FIELDER

and Optional Attachments

## Operator and Parts Manual



REIST Industries Inc.  
100 Union Street  
Elmira, Ontario, Canada  
N3B 3L7

Phone: 519-669-1501  
Fax: 519-669-3021  
Toll Free: 1-877-467-3478  
[www.reistindustries.com](http://www.reistindustries.com)

Effective Serial Number R2966



**Contents**

INTRODUCTION..... 2  
PRODUCT CONFIGURATION ..... 3  
GENERAL SAFETY PRECAUTIONS ..... 4  
OPERATION AND TRANSPORTATION ON PUBLIC ROADS AND AREAS ..... 5  
SAFETY DECALS ..... 6  
SETUP INSTRUCTIONS ..... 8  
    ATTACHING TO TRACTOR INSTRUCTIONS ..... 8  
    OPERATION OF IN-FIELDER ..... 8  
    GROUND SPEED: ..... 8  
MAINTENANCE ..... 9  
SWEEPER INSTRUCTIONS ..... 10  
    OPERATION INSTRUCTIONS: ..... 10  
PARTS ..... 11  
    D84-ASSMBLY ..... 11  
    BROOM ..... 12  
    ROLLER & LEVELING BLADE ..... 13  
    PULVERIZER ROLL ..... 14  
    WATER TANK ..... 15  
    REAR HARROW..... 16  
    HARROW..... 17  
    SWEEPER..... 18  
    EDGER ..... 21

Record your product information for future reference:

Model Number: \_\_\_\_\_

Serial Number: \_\_\_\_\_

In Service Date: \_\_\_\_\_

Sold By: \_\_\_\_\_

# INTRODUCTION

Thank you for choosing the REIST IN-FIELDER.

We feel confident that this equipment will meet your expectations in workmanship, reliability and performance when used as designed. This manual is to assist you with the safe operation of the REIST IN-FIELDER. It also has a parts list to help you when replacement parts are required. Any person who will be assembling, attaching, maintaining, or operating this product and the prime mover to which it is attached, are required to read and completely understand the information and instructions contained in this manual and that of the prime mover. Always obtain further assistance by contacting the dealer from which this product was purchased or by contacting REIST Industries at the telephone number or address below. Keep this manual available for reference whenever this product is being handled or used and we recommend that it is reviewed periodically and before seasonal use. Provide this manual to any new owners and/or operators and ensure they fully understand the safe operation of this equipment before it is placed in service.

Replacement copies of this manual are available for downloading at:  
[www.reistindustries.com](http://www.reistindustries.com)

## Innovation Working for You

### **REIST Industries Inc.**

100 Union Street  
Elmira, Ontario, Canada  
N3B 3L7

Phone: 519-669-1501  
Fax: 519-669-3021  
Toll Free: 1-877-467-3478

The illustrations and information contained within this manual were current at the time of publication. Under our policy of continuous improvement, we reserve the right to change specifications and designs without prior notice. The illustrations do not necessarily show the standard version of product offered by REIST Industries.

## PRODUCT CONFIGURATION

To ensure that the right IN-FIELDER is matched to the prime mover, REIST IN-FIELDER specs are as follow:

### IN-FIELDER

Model	Working Width	TPH Mount	Pounds	Kilograms
D84	84"	1 & 2	930	422

For each option add additional weight to base model

Description	Part #	Pounds	Kilograms
Edger	E105153	100	45
Sweeper	RSB20	130	60
Long Tine Rake	RLTR84	175	80
Water Tank	TW50G	50 empty 470 full	23 empty 215 full



### WARNING!

Exceeding the recommended specifications can result in damage to the equipment and will void all REIST Industries warranties.

The following references are used throughout this Operator's and Parts Manual:

Front or Rear Mounted	Orientation that is determined in relation to the operator of the equipment when seated in the normal operating position of the prime mover
Prime Mover	The engine-driven machine to which this product is attached
Right, Left, Front, Rear	Orientation that is determined in relation to the operator of the equipment when seated in the normal operating position. Unless otherwise noted
Attachment, Implement	Refers to the In-Fielder whether attached or separate from the prime mover
Equipment	Refers to the Implement and / or prime mover whether separate or connected
<b>WARNING, CAUTION, IMPORTANT</b>	A notice that relates to the safe and efficient operation of the In-Fielder or prime mover. Read and understand the reference before attaching or operating the In-Fielder or the prime mover

## GENERAL SAFETY PRECAUTIONS

Careful operation is the best assurance against accidents. It is the owner's responsibility to make sure that all operators read and understand this manual and follow the recommendations, cautions and warnings before connecting to a prime mover and operating the equipment. The REIST IN-FIELDER was designed for use to grade and level all types of soil including stone dust, gravel or similar products.

Familiarize yourself with all controls and know how to quickly stop the equipment and all rotating parts in the case of an emergency.

Never let an untrained person or a child operate equipment.



### WARNING!

#### DO NOT MODIFY THE IN-FIELDER OR PRIME MOVER

Modifications may weaken the integrity of the IN-FIELDER and may impair the operation, safety, and performance of the product. When making repairs, only qualified technicians using the manufacturer's genuine parts, following authorized instructions, shall attempt the repair. Never modify any ROPS (Roll Over Protection Structure) or FOPS (Falling Object Protective Structure) equipment or other safety device or remove guarding. Any modifications must be sanctioned in writing by an authorized representative of the manufacturer.



### WARNING!

#### MAINTAIN AND REPAIR EQUIPMENT SAFELY

- Do not wear loose clothing, or any accessories that can catch in moving parts
- If you have long hair, cover or secure it so that it does not become entangled in the equipment
- Work on a level surface in a well-lit area.
- Always lower raised equipment to the ground or securely support it to prevent unintentional movement
- Remove and retain the prime mover's ignition key
- Use the correct tool for the job at hand. Make sure they are in good condition for the task required
- Wear the protective equipment specified by the tool manufacturer
- Use care when working on hydraulic systems and understand how to check for and release trapped hydraulic pressure



## **WARNING!**

### **STAY CLEAR OF ROTATING OBJECTS**

Keep hands, feet and clothing away from power driven rotating parts.



Never use your hands to clear if clogged. Never allow anyone to reach into the or get close to rotating sweeper brush. Keep everyone clear until the prime mover engine is off and the hydraulic pressure has been relieved.


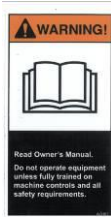




## **OPERATION AND TRANSPORTATION ON PUBLIC ROADS AND AREAS**

Always adhere to the local laws and regulations concerning traveling or operating on public roadways and areas. Clean all lights, reflectors and mirrors ensuring that all lighting is in working order before moving. Know the area! i.e. Elevations, steep side drop offs. Watch out for pedestrians and use caution when approaching pedestrians, hazardous objects (stones, etc.) may inadvertently be discharged. Always be alert while transporting or operating the equipment. Select a safe ground speed when transporting from one area to another. When operating, or driving on roadways, travel in such a way that faster moving vehicles may pass you safely.

# SAFETY DECALS

Contact REIST Industries if replacement safety signs are required.

## DECAL PART NUMBERS

Item	Part Number	Description
	Serial	Serial Number Plate
	WD103	Read Manual Decal
	RD107	REIST Decal
	RD115	Made in Canada Decal
	WD105	Flying Objects Decal
	RD108	Infielder Decal





## **WARNING!**

### **READ OPERATOR'S MANUAL BEFORE OPERATING**

Do not operate equipment until you are completely trained by a qualified operator in how to use the controls, understand the machine's capabilities, dimensions, and all safety requirements. Refer to your operator's manual for these instructions.

- Do not operate an engine in confined or non-ventilated area
- Do not perform adjustments or repairs with the engine running
- Always lower raised equipment to the ground or securely support it to prevent unintentional movement
- Do not operate on excessive inclines or side slopes – know the limitations of the prime mover – be careful when turning on slopes as a rollover condition may exist
- Never carry passengers
- Keep bystanders away from the machine when in operation
- Be aware of pedestrians
- Know how to quickly stop the equipment and all rotating parts in the case of an emergency
- Stop the prime mover, lower implements and turn off the engine before dismounting
- Refer to the prime mover's Operator's Manual for additional information

## SETUP INSTRUCTIONS

Improper installation, operation, or maintenance of this equipment could result in serious injury or death. FOLLOW ALL SAFETY INSTRUCTIONS IN THIS MANUAL AND THE PRIME MOVER'S MANUAL(S).

Refer to the operator's manual(s) for your prime mover and follow the mounting instructions contained therein.



### **WARNING!**

**STAY CLEAR OF ROTATING OBJECTS**

Keep hands, feet and clothing away from power driven rotating parts.

### ***ATTACHING TO TRACTOR INSTRUCTIONS***

- D84 IN-FIELDER hitch has category one or two.
- **IMPORTANT** For the IN-FIELDER to work properly, proper pin sizes need to be used when attaching the IN-FIELDER to the prime mover.
- Make sure that bottom 3 PTH arms are level with tractor
- Be sure the 3-point hitch is set in the non-sway position (See prime mover manual for details).
- If equipped with sweeper or hydraulic rear tine harrow connect hydraulic hoses to remotes.

### ***OPERATION OF IN-FIELDER***

- Be sure the area is clear of all bystanders
- Refer to the prime mover starting instructions
- Lower IN-FIELDER to ground, putting 3 PTH lever to max. down position.
- Adjust top link until cutting blade makes ground contact by approx. 1/8 inch.
- If front cutting edge is never touching, shorten top link to lower cutting edge.
- At first when field is uneven cutting edge will only be cutting sometimes.
- If front cutting edge is overflowing, lengthen top link to raise cutting edge.

### ***GROUND SPEED:***

- Travel speed is governed by the condition of the surface being graded.
- Start grooming at 3 to 5 mph (5 to 8 km/hr).
- If chatter occurs while grooming **SLOW DOWN**.
- Use alternative driving patterns as you groom.

## **MAINTENANCE**

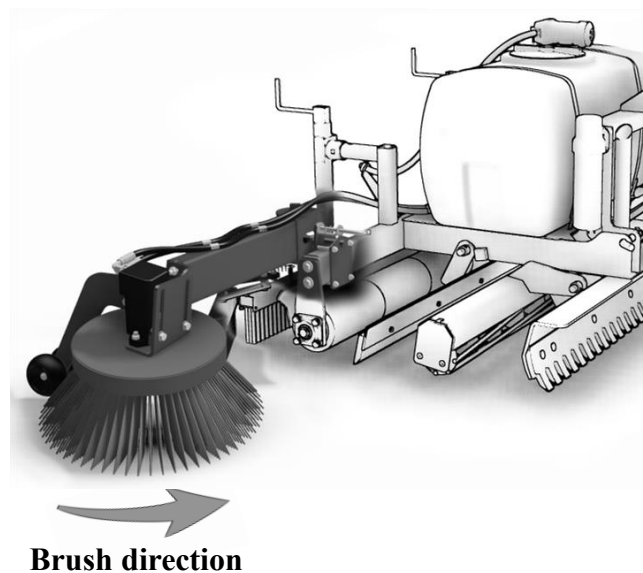
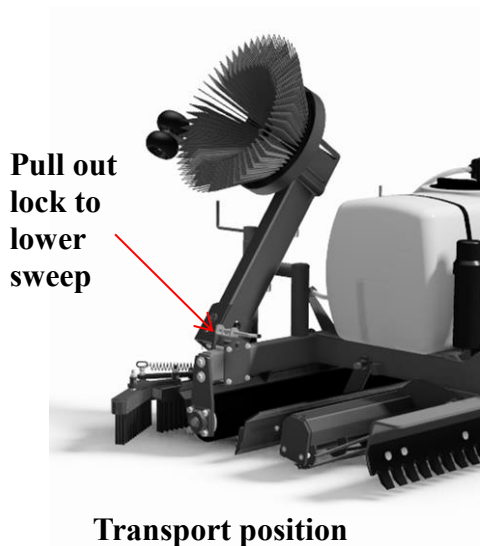
1. Check all nuts and bolts after first hour of use and then every day before use.
2. Clean grease fittings with clean cloth before adding grease to avoid injecting dirt and sand.
3. Replace damaged grease fittings.
4. Lubricate bearings at both ends of reel and roller after every 50 hours of use.
5. Every 50 hours check hinge bushings, replace if worn.
6. Replace brushes, cutting edge, leveling blade when worn.
7. It is **IMPORTANT** that front blade and rear roller are parallel. When replacing cutting edge take time to make sure it is parallel with roller. To adjust rear roller with front blade, put machine on a level cement surface and adjust right side of roller, up or down, as needed.

## **SWEEPER INSTRUCTIONS**

The sweeper option saves time and manual labour. Whether the baseball diamond has clay or stone dust, over time material piles up along the chain link fence, the edge of the grass of the infield, or warning track. The sweeper will brush the clay or stone dust back to where it belongs and leaves a smoother transition from the grass to the clay. The angle of the brush and the gauge wheel are pre-set but as the brush wears the adjustments will have to be made.

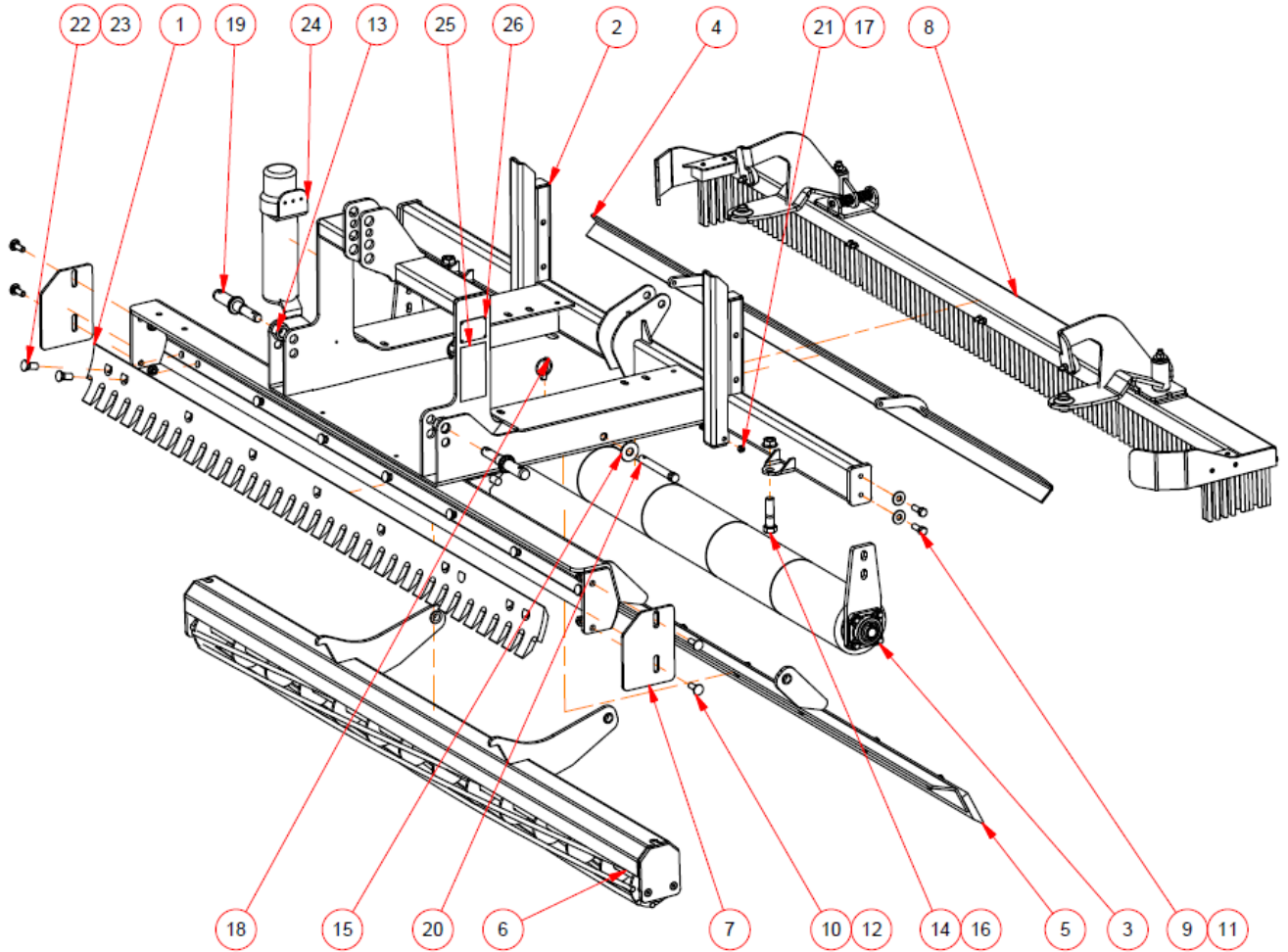
### ***OPERATION INSTRUCTIONS:***

- Lower the brush from transport position
- Lower Infielder so it sits on the back rollers
- Lengthen top link so that front cutting edge is off the ground by an inch or two
- Engage hydraulics so that brush turns counter clock wise
- Increase tractor Rpm to desired brush speed
- Drive along the fence so that the brush is touching the fence, the arm is spring loaded and will spring back
- Along warning track or infield, 80% of the brush should be on the grass to sweep clay or stone dust back in



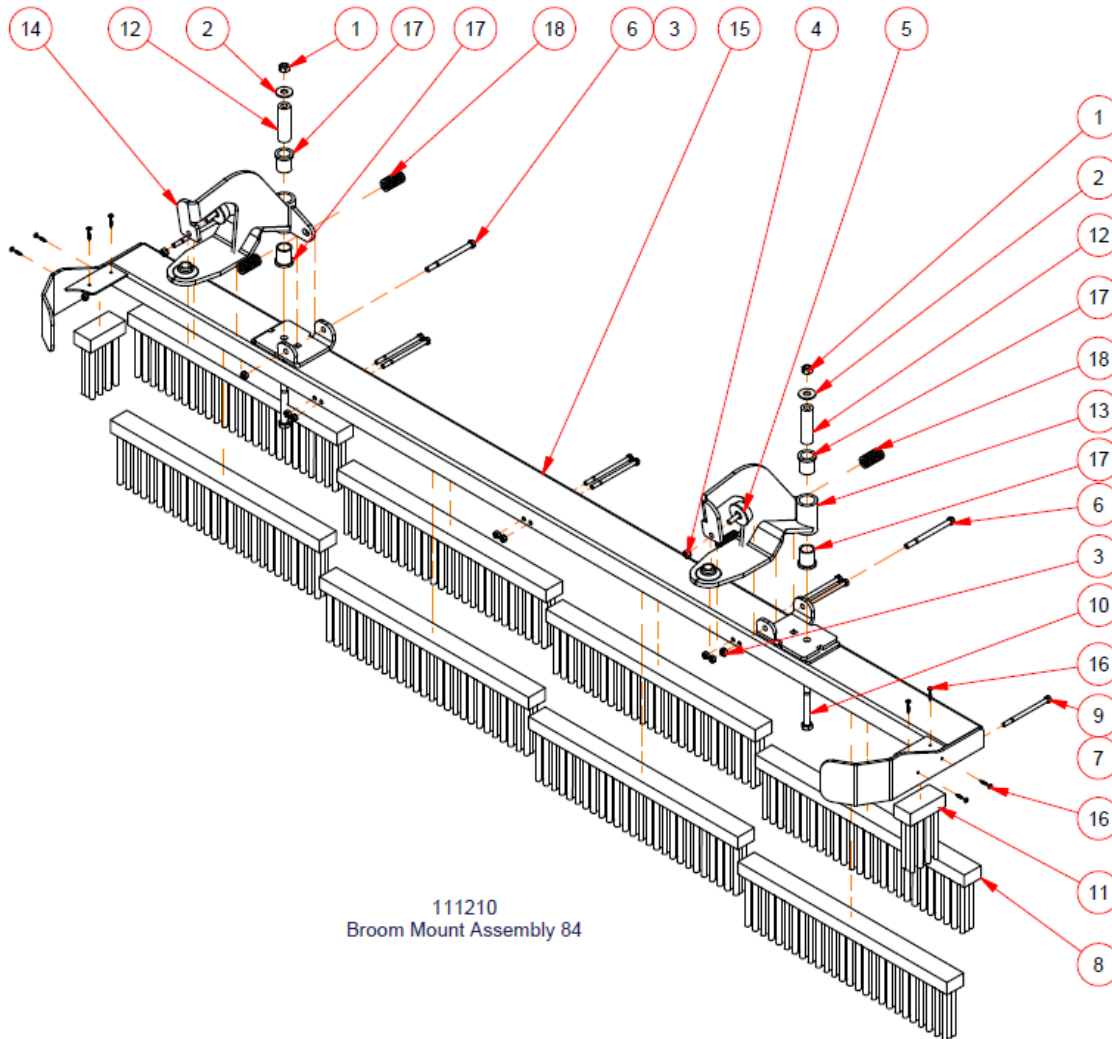
# PARTS

## D84-ASSMBLY



Parts List				Parts List			
ITEM	QTY	PART NUMBER	DESCRIPTION	ITEM	QTY	PART NUMBER	DESCRIPTION
1	1	104772	72" Serated Blade	14	2	343	Hex Bolt
2	1	105262	Main Frame Weldment 84	15	2	34F	Flat Washer
3	1	105280	Roller Assembly 84	16	2	34FSLN	Flange Nut
4	1	105288	Scraper 84	17	2	383	Hex Bolt
5	1	105289	Leveller Assembly 84	18	2	385507	Lynch Pin
6	1	105304	Pulverizer Roll Assembly 84	19	2	386010	Lift Arm Pin
7	2	105404	End Wear Plate	20	2	387504	Top Link Pin
8	1	111210	Broom Mount Assembly 84	21	2	38CLN	NC Lock Nut
9	4	12112	Hex Bolt	22	9	5823PB	5/8 x 1-1/2 Plow Bolt
10	4	12112C	Carriage Bolt	23	9	58FSLN	Flange Nut
11	4	12F	Flat Washer	24	1	67.222.000	Manual Holder
12	4	12FSLN	Flange Nut	25	1	DW103	Read Manual Decal
13	2	1FN	NF Nut	26	1	Serial	Serial # Plate

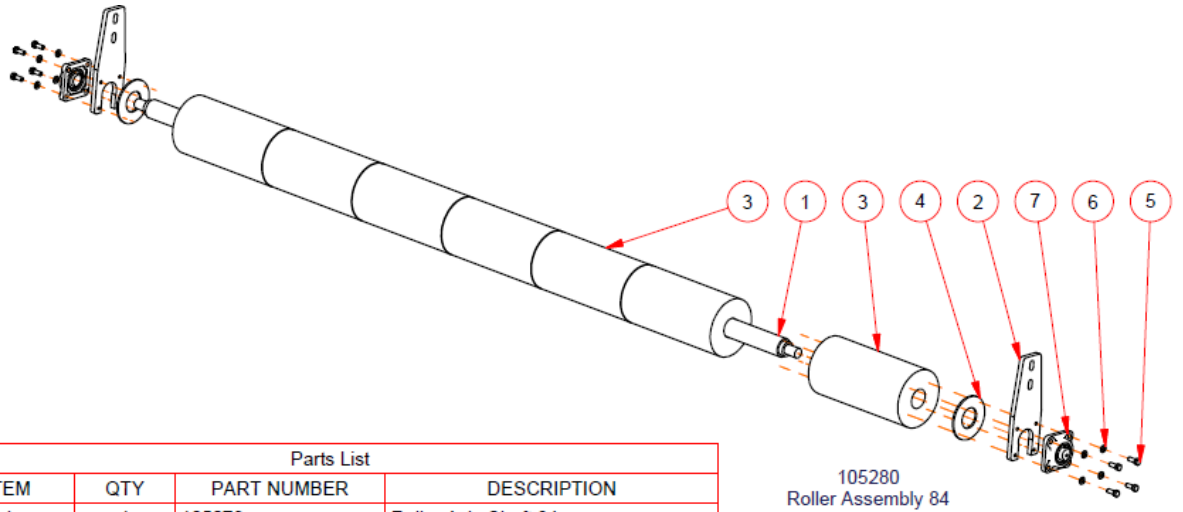
# BROOM



111210  
Broom Mount Assembly 84

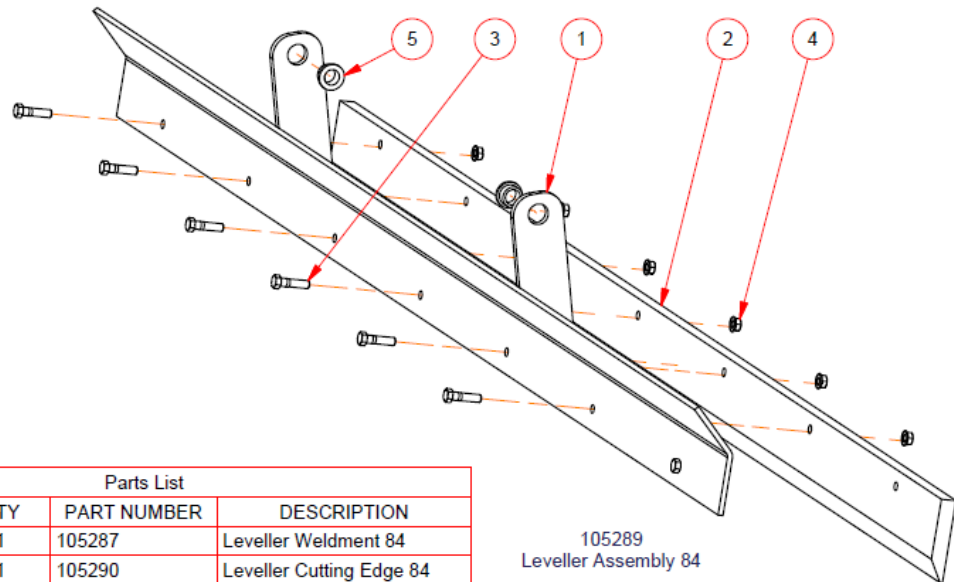
Parts List				Parts List			
ITEM	QTY	PART NUMBER	DESCRIPTION	ITEM	QTY	PART NUMBER	DESCRIPTION
1	2	12CLN	NC Lock Nut	10	2	12412	Hex Bolt
2	2	12F	Flat Washer	11	2	108281	Short Brush
3	2	38CLN	NC Lock Nut	12	2	108694	Spindle
4	2	38N	Hex Nut	13	1	108700	Weldment L
5	2	315-H09-1M	Bolt on Rubber Bumper	14	1	111203	Weldment R
6	2	385	Hex Bolt	15	1	111209	Brush Frame Weldment 84
7	8	516N	Hex Nut	16	8	1261823	Screw
8	8	2010	Main Frame Brush	17	4	MF1-1620-24	Ingus bushing
9	8	5165	Hex Bolt	18	4	MHC-14	Compression Spring

## ROLLER & LEVELING BLADE



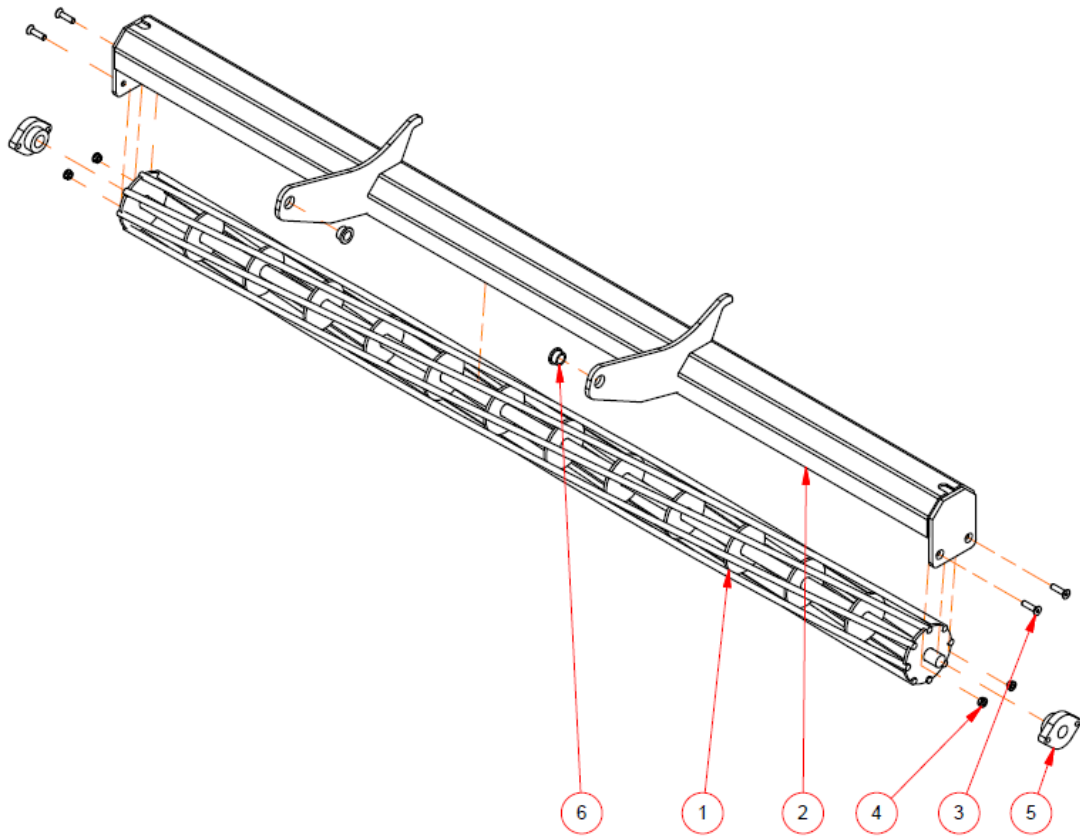
Parts List			
ITEM	QTY	PART NUMBER	DESCRIPTION
1	1	105279	Roller Axle Shaft 84
2	2	2008	Roller End Plate
3	7	2009	Roller Section
4	2	2F	Flat Washer
5	8	381	Hex Bolt
6	8	38L	Lock Washer
7	2	UCF205-100	4 Bolt Flange Bearing

## Leveler Assembly



Parts List			
ITEM	QTY	PART NUMBER	DESCRIPTION
1	1	105287	Leveler Weldment 84
2	1	105290	Leveler Cutting Edge 84
3	7	38112	Hex Bolt
4	7	38FSLN	Flange Nut
5	2	MFI-1216-10	Ingus bushing

# PULVERIZER ROLL

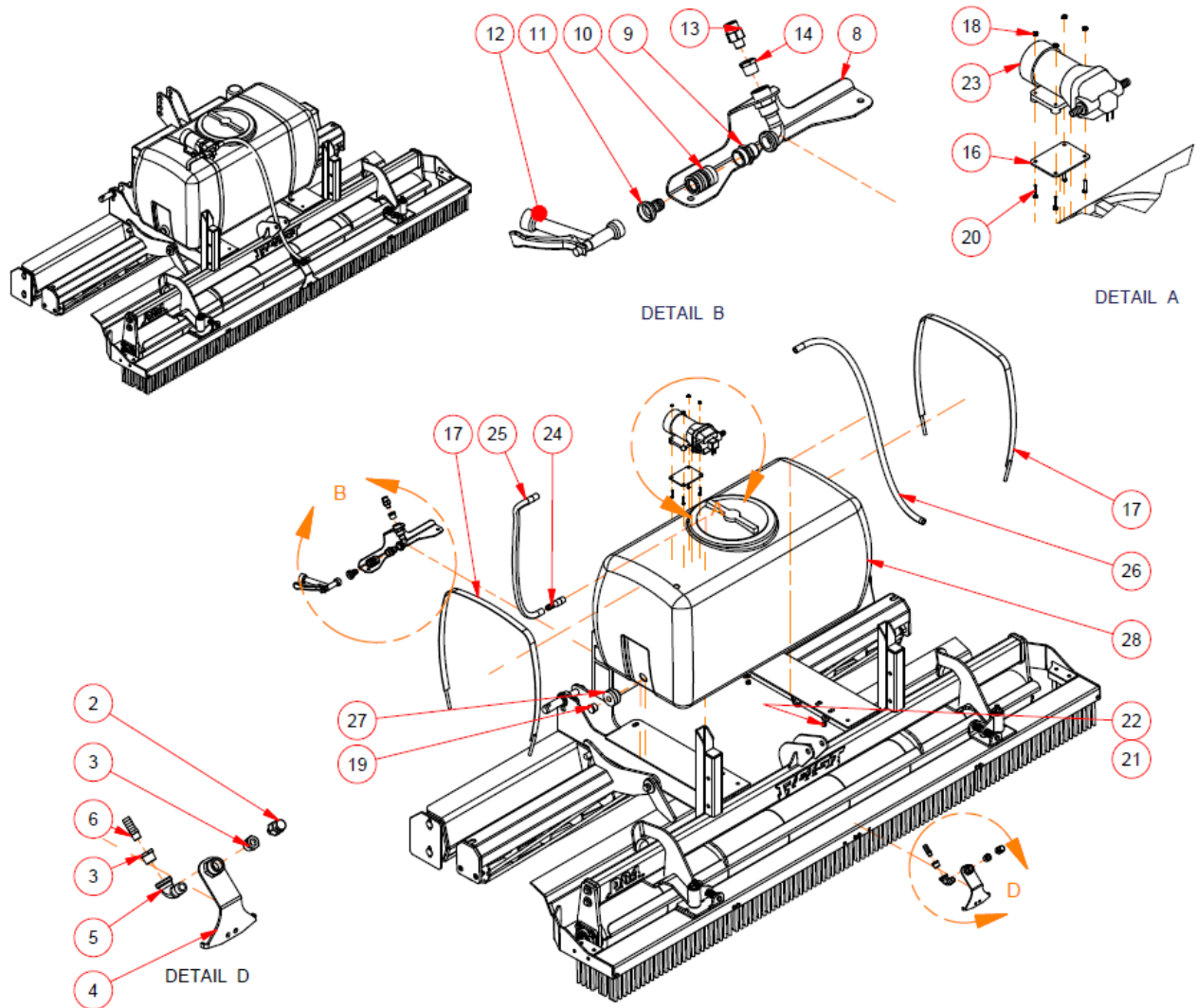


105304  
Pulverizer Roll Assembly 84

Parts List			
ITEM	QTY	PART NUMBER	DESCRIPTION
1	1	105268	Pulverizer-Roller 84
2	1	105271	Pulverizer Frame 84
3	4	38112FH	Flat Head Bolt
4	4	38FSLN	Flange Nut
5	2	FD205 100 Brg	2 Bolt Bearing
6	2	MFI-1216-10	Ingus bushing

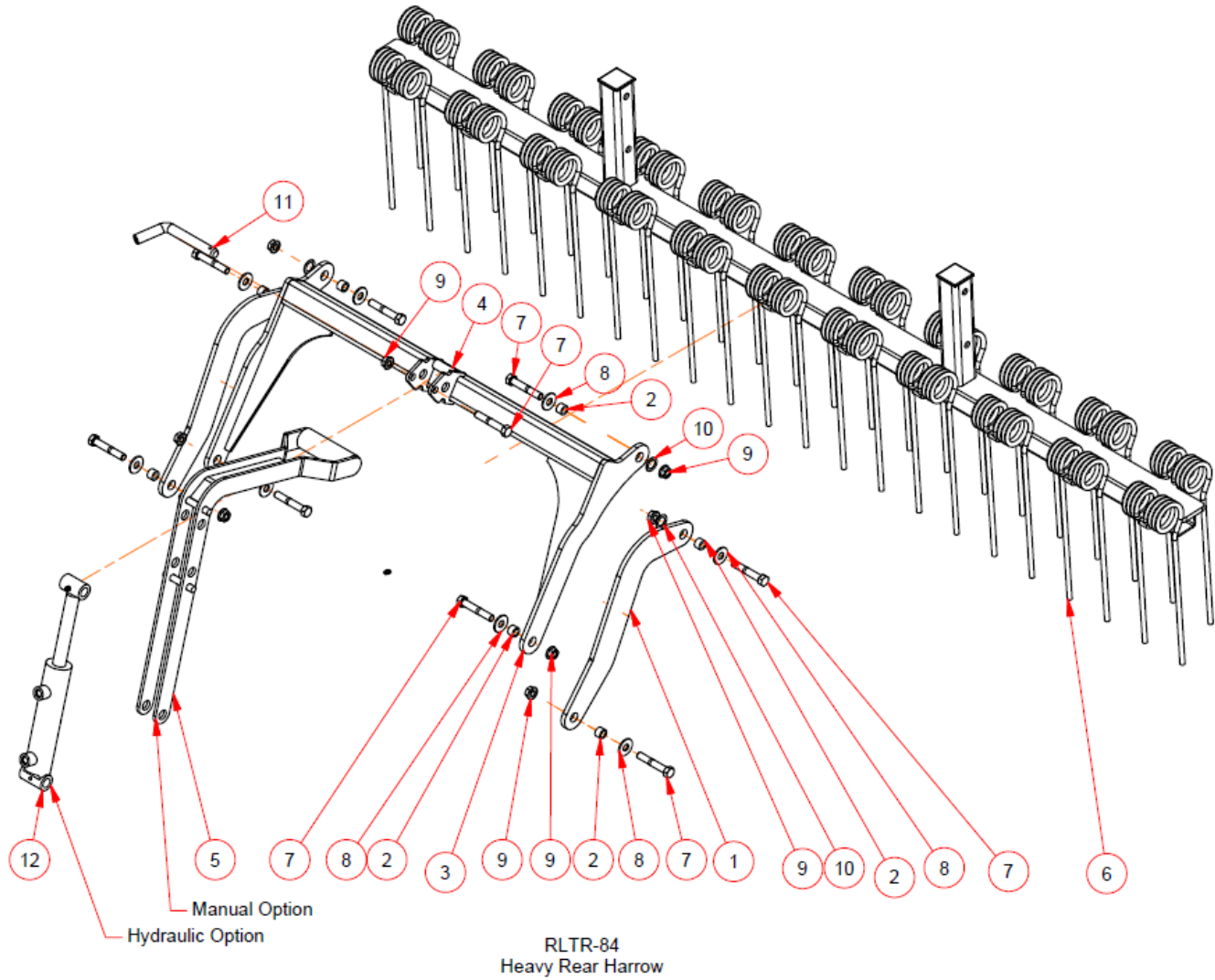


# WATER TANK



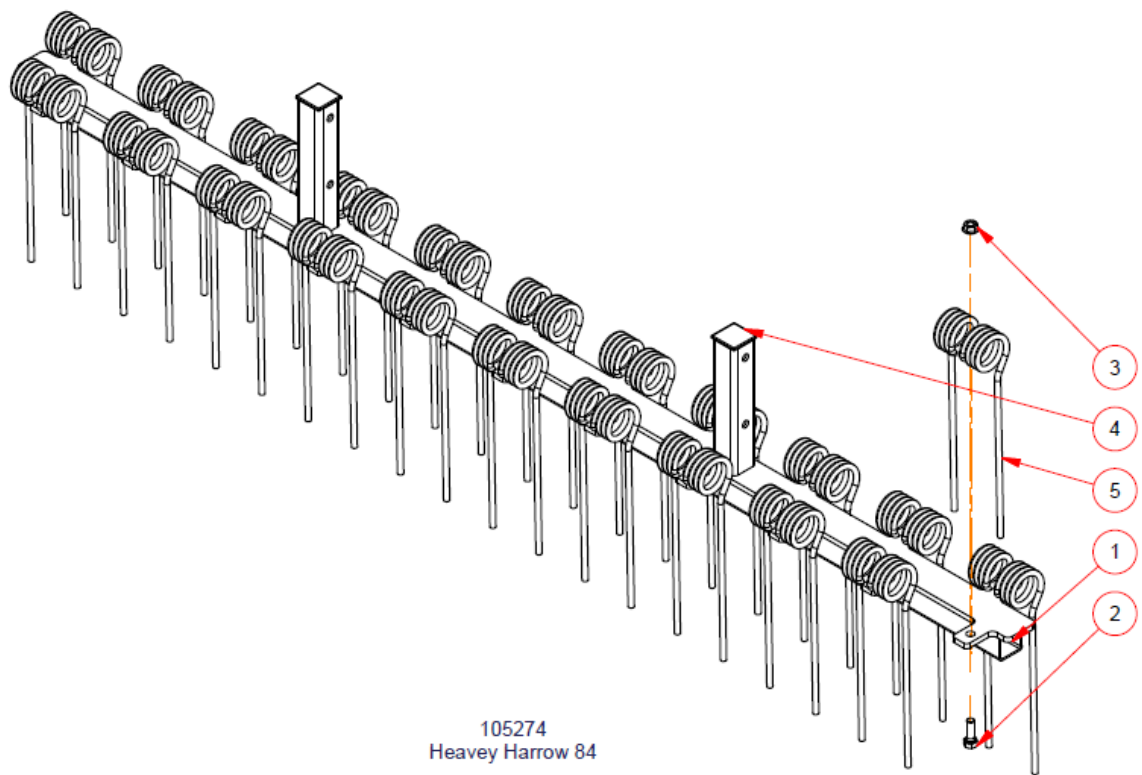
Parts List				Parts List			
ITEM	QTY	PART NUMBER	DESCRIPTION	ITEM	QTY	PART NUMBER	DESCRIPTION
1	1	105223	Nozzle Mount	16	1	2025	Pump Mounting Plate
2	1	1870FL	Nozzle	17	2	2026	50 gallon Tank Strap
3	2	3109*8*4	Reducer 1/2 X 1/4	18	4	31246	Nut
4	1	115014	Nozzle Mount Weldment	19	1	34PP	34 Plastic Plug
5	1	StreetEl	90 Street Elbow	20	4	38015	Bolt
6	1	112034	1/2 Hose x 1/4 NPT Brass Barb	21	4	38F	Flat Washer
7	1	105834	Front Nozzle Mount	22	4	38N	Hex Nut
8	1	105837	Nozzel Mount Weldment	23	1	4300-500A	Flojet Pump 12 volt
9	1	105838	Brass Pipe to Hose Connector	24	1	CNSS-5	1/2 Stainless Barb hose adaptor
10	1	105839	Brass Quick Connect Coupler	25	1	PCB12 (26"lg)	Suction Hose
11	1	105841	Brass Quick Connect Nipple	26	1	PCB12 (39"lg)	Pressure Hose
12	1	105842	Hose Nozzle	27	1	PCF60401	Compression Fitting
13	1	1870FL	Nozzle	28	1	TPC0050	Water Tank 50 gal
14	1	3109*8*4	Reducer 1/2 X 1/4	29	1	WTSK	Electric Harness
15	1	StreetEl	90 Street Elbow				

# REAR HARROW LINKAGE



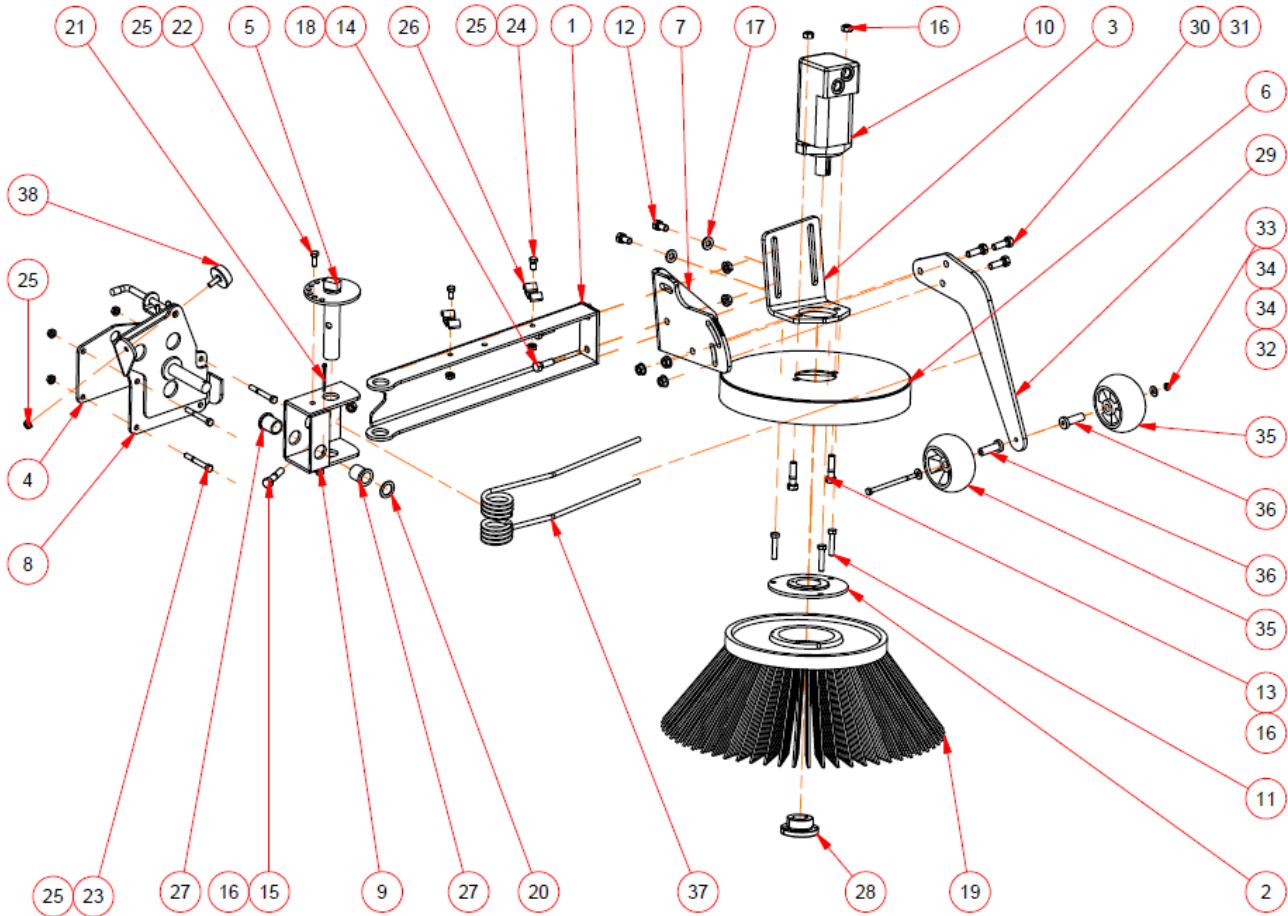
Parts List				Parts List			
ITEM	QTY	PART NUMBER	DESCRIPTION	ITEM	QTY	PART NUMBER	DESCRIPTION
1	2	104845	Harrow Link Outside	7	9	12*3	Hex Bolt
2	8	105131	Bushing	8	8	12F	Flat Washer
3	1	105160	H Frame Weldment	9	9	12FSLN	Flange Nut
4	1	105163	Handle Bushing	10	4	34M	Machinery Washer
5	1	105164	Lift Handle	11	1	385003	3/4 Hitch Pin
6	1	105274	Heavy Harrow 84	12	1	HYS-15MAL-04-10	1-1/2x4 Cylinder

# HARROW

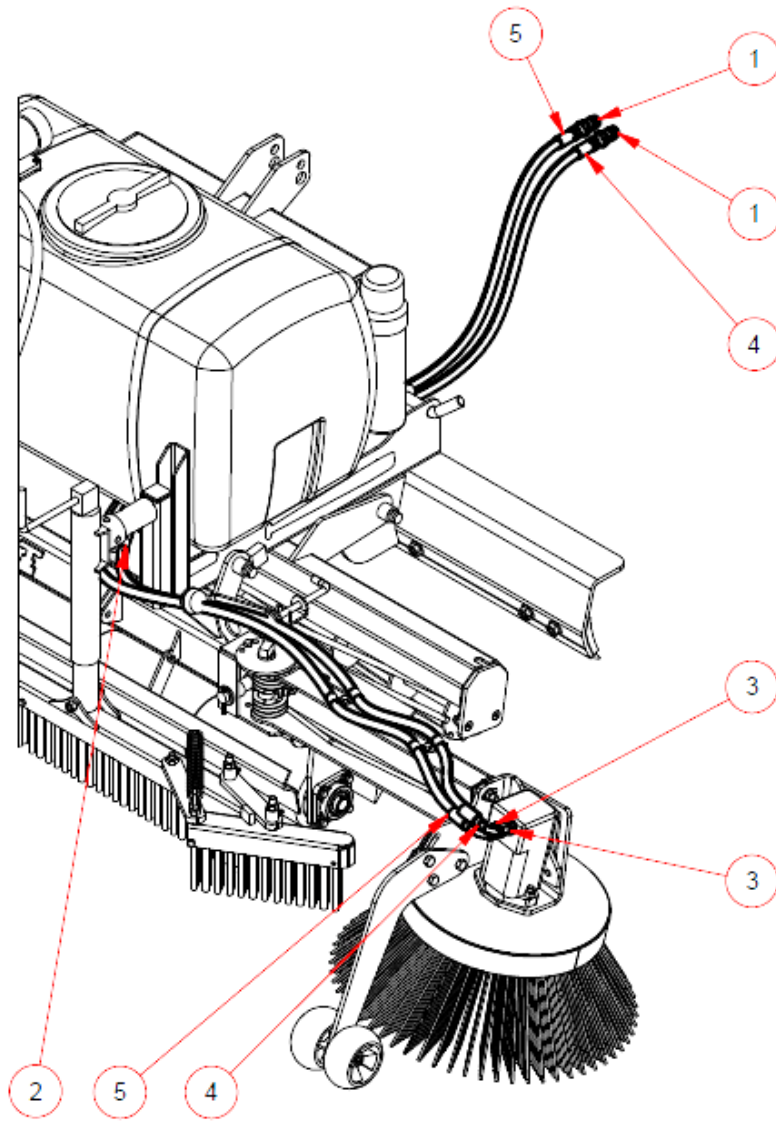


Parts List			
ITEM	QTY	PART NUMBER	DESCRIPTION
3	22	12FSLN	Flange Nut
2	22	12112	Hex Bolt
1	1	105275	Harrow Weldment 84
5	22	T16-0803	Tine
4	2	T-64-U4	Cap 3-16x2x2

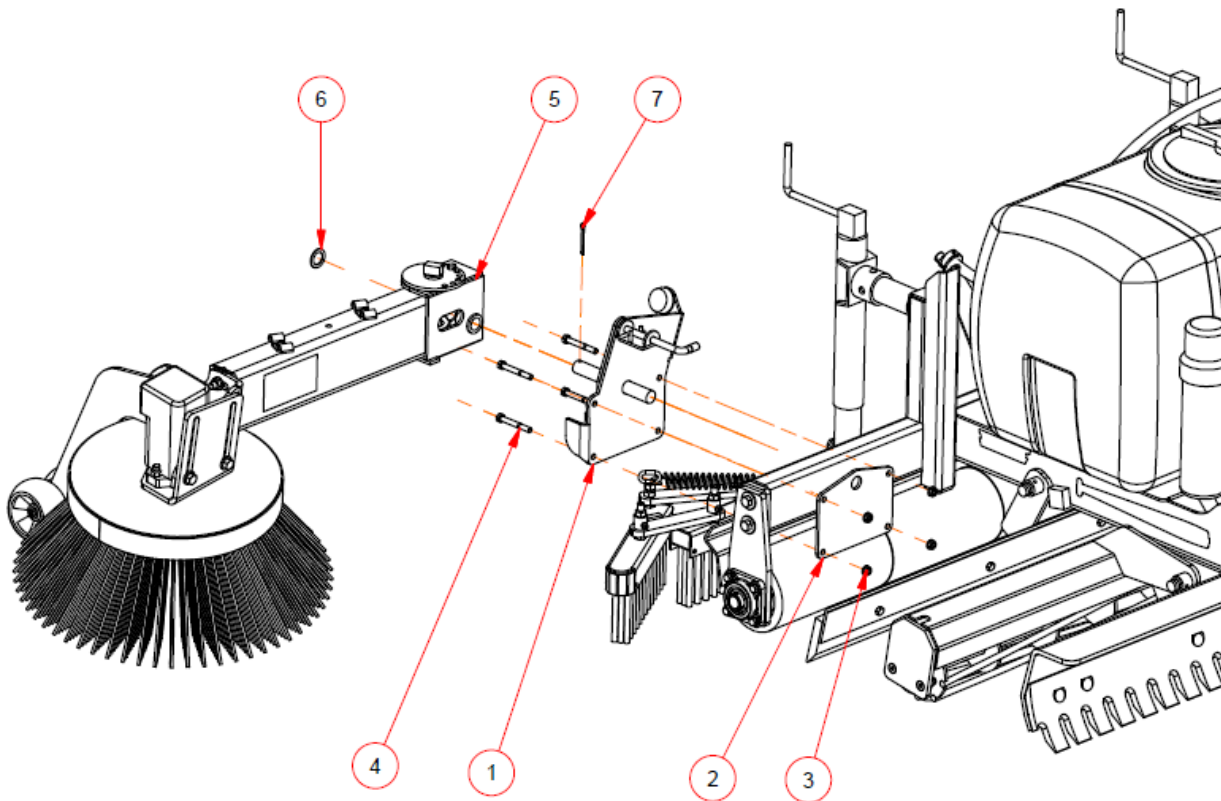
# SWEeper



Parts List				Parts List				Parts List			
ITEM	QTY	PART NUMBER	DESCRIPTION	ITEM	QTY	PART NUMBER	DESCRIPTION	ITEM	QTY	PART NUMBER	DESCRIPTION
1	1	100600	Arm Weldment	14	2	12112	Hex Bolt	27	2	MF1-1620-24	Ingus bushing
2	1	100601	Brush Adaptor	15	1	12212	Hex Bolt	28	1	SDS1-1/4	SDS Type QD Bushing, 1.25" Bore
3	1	100602	Motor Mount Bracket	16	3	12CLN	NC Lock Nut	29	1	100609	Gauge Wheel Arm
4	1	105102	Mount Plate	17	2	12FL	BP Flat Washer	30	3	12112	Hex Bolt
5	1	100604	Pin Weldment	18	2	12FSLN	Flange Nut	31	3	12FSLN	Flange Nut
6	1	100605	Shield	19	1	171104	Brush	32	1	5165	Hex Bolt
7	1	100606	Slotted End Cap	20	1	1M	Machinery Washer	33	1	516CLN	NC Lock Nut
8	1	115037	Spindle Weldment	21	1	3162CP	Cotter Pin	34	2	516F	Flat Washer
9	1	115036	Hinge Weldment	22	1	381	Hex Bolt	35	2	M111489	Roller
10	1	104-1026	Hydraulic Motor	23	4	383	Hex Bolt	36	2	M111491	Shoulder Bushing
11	3	1050	Metric Hex Bolt	24	2	3834	Hex Bolt	37	1	T16-0803	Tine
12	2	12*1	Hex Bolt	25	8	38FSLN	Flange Nut	38	1	315-H09-1M	Bolt on Rubber Bumper
13	2	12*2	Hex Bolt	26	2	C-1038	Hose Clip	39	1	WD105	Flying Object Decal

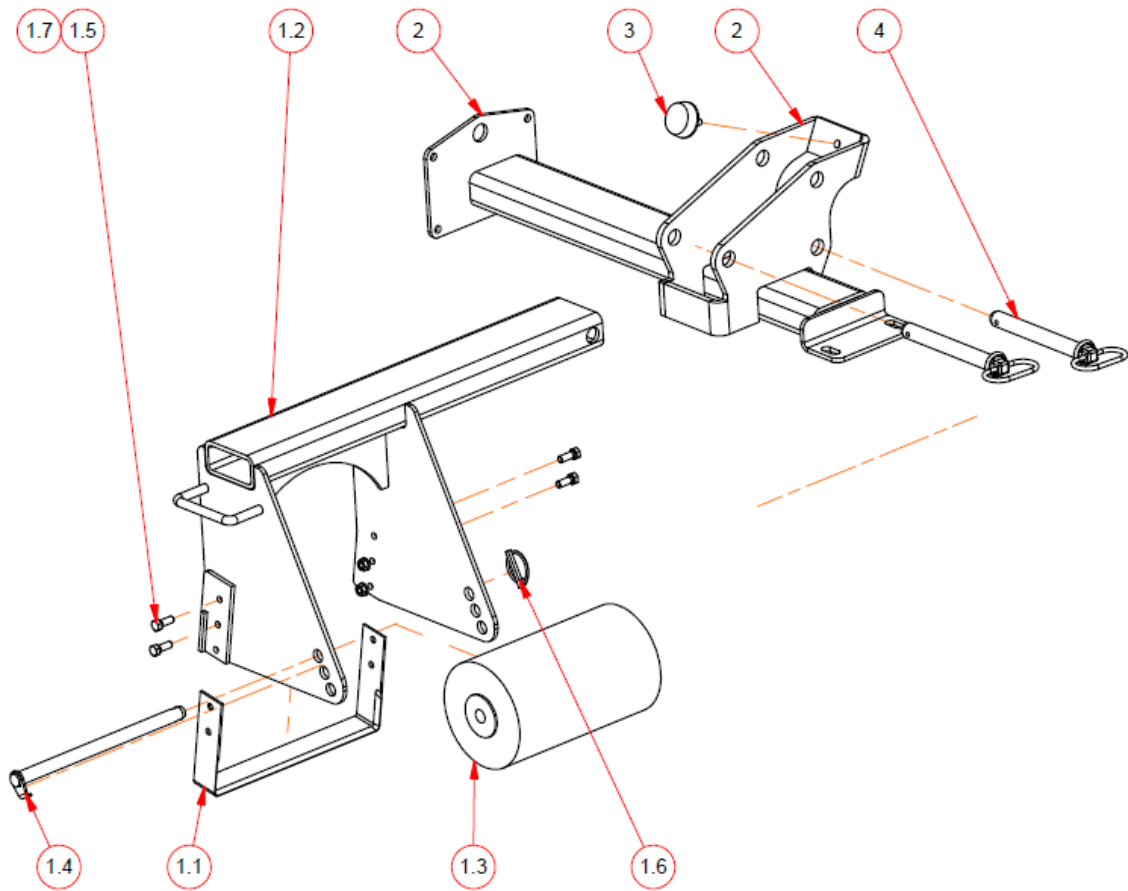
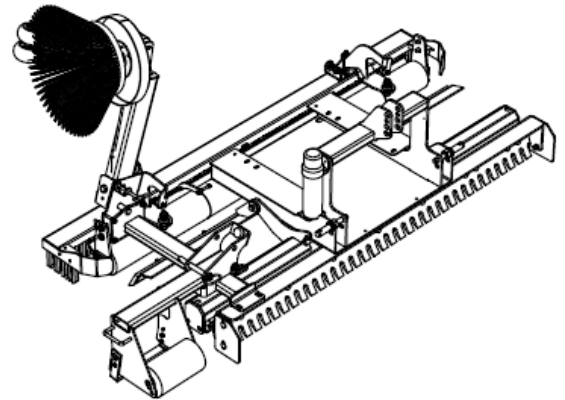


Parts List			
ITEM	QTY	PART NUMBER	DESCRIPTION
1	2	8010-4	1/2 Male Tip
2	1	C-1038	Hose Clip
3	2	5315*8*10	Fitting
4	1	H24506-108-668-160	Hose 1
5	1	H24506-108-668-160	Hose 2



Parts List			
ITEM	QTY	PART NUMBER	DESCRIPTION
1	1	115037	Spindle Weldment
2	1	105102	Mount Plate
3	8	38FSLN	Flange Nut
4	4	383	Hex Bolt
5	1	115036	Hinge Weldment
6	1	1M	Machinery Washer
7	1	3162CP	Cotter Pin

# EDGER



Parts List				Parts List			
ITEM	QTY	PART NUMBER	DESCRIPTION	ITEM	QTY	PART NUMBER	DESCRIPTION
1	1	105147	Stationary	1.6	1	385503	5/16 Lynch Pin
1.1	1	104922	Edger Blade	1.7	4	38FSLN	Flange Nut
1.2	1	105301	Edger Weldment	2	1	105154	Edger Base Weldment
1.3	1	105559	Slicer Roller	3	1	315-H09-1M	Bolt on Rubber Bumper
1.4	1	105585	Roller Pin	4	2	385609	Draw Pin
1.5	4	381NC	BP NC Hex Bolt				





REIST Industries Inc.  
100 Union Street  
Elmira, Ontario, Canada  
N3B 3L7